

PII REAL ESTATE, LLC

Elgin, IL For Sale



Location: Elgin, IL - Kane County

Sales Price: Subject to Offer

Key Features:

- Unit Count: 38 plotted single family lots
- Sewer , water , gas and electric to site
- Substantial site improvements completed
- Close to Route 20 and Randall Road
- No SSA

For Information Please Contact:

Mark L. Wilson mark@stahelin.com

PH: (630) 469-3331

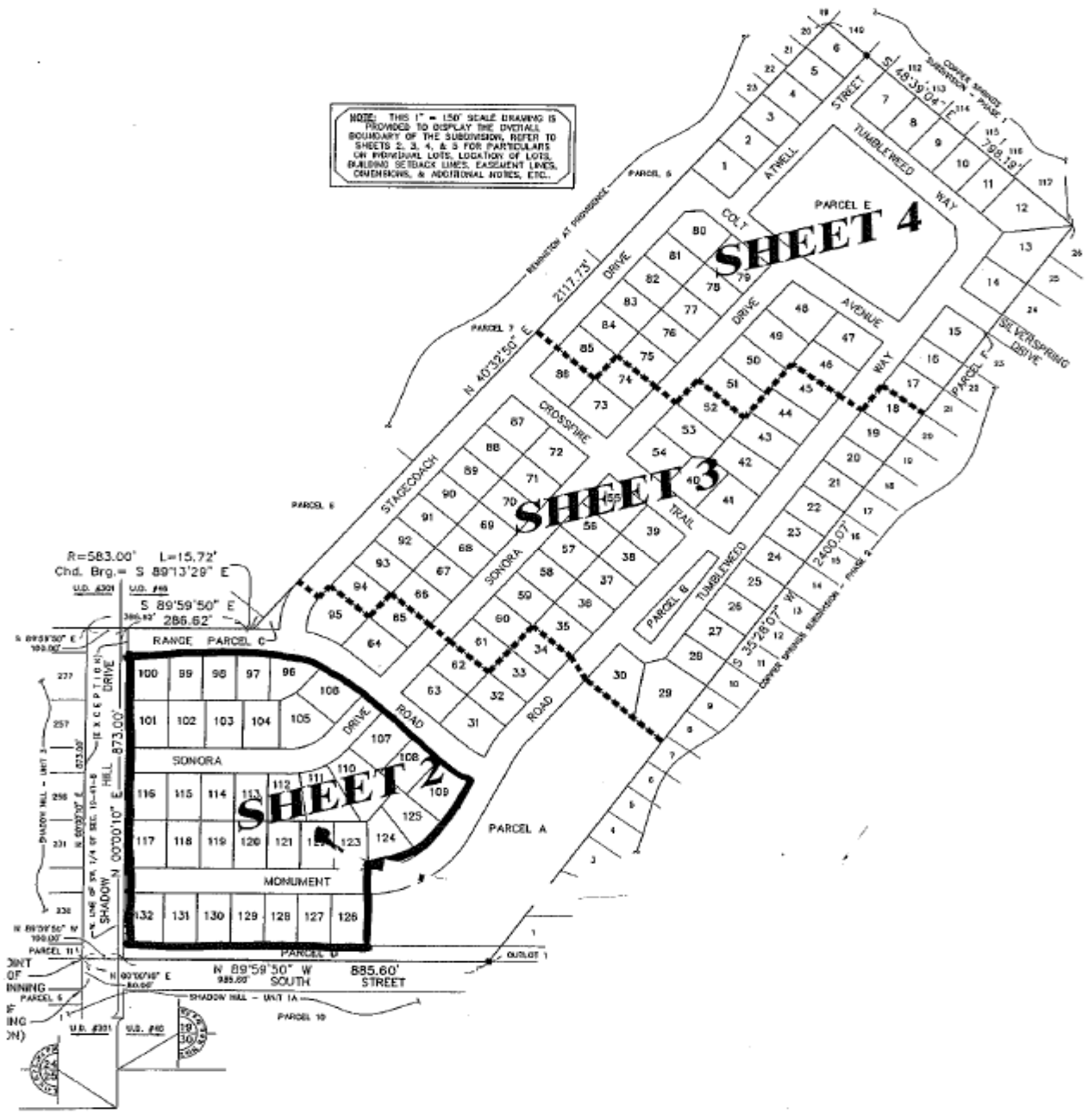
FAX: (630) 469-3307

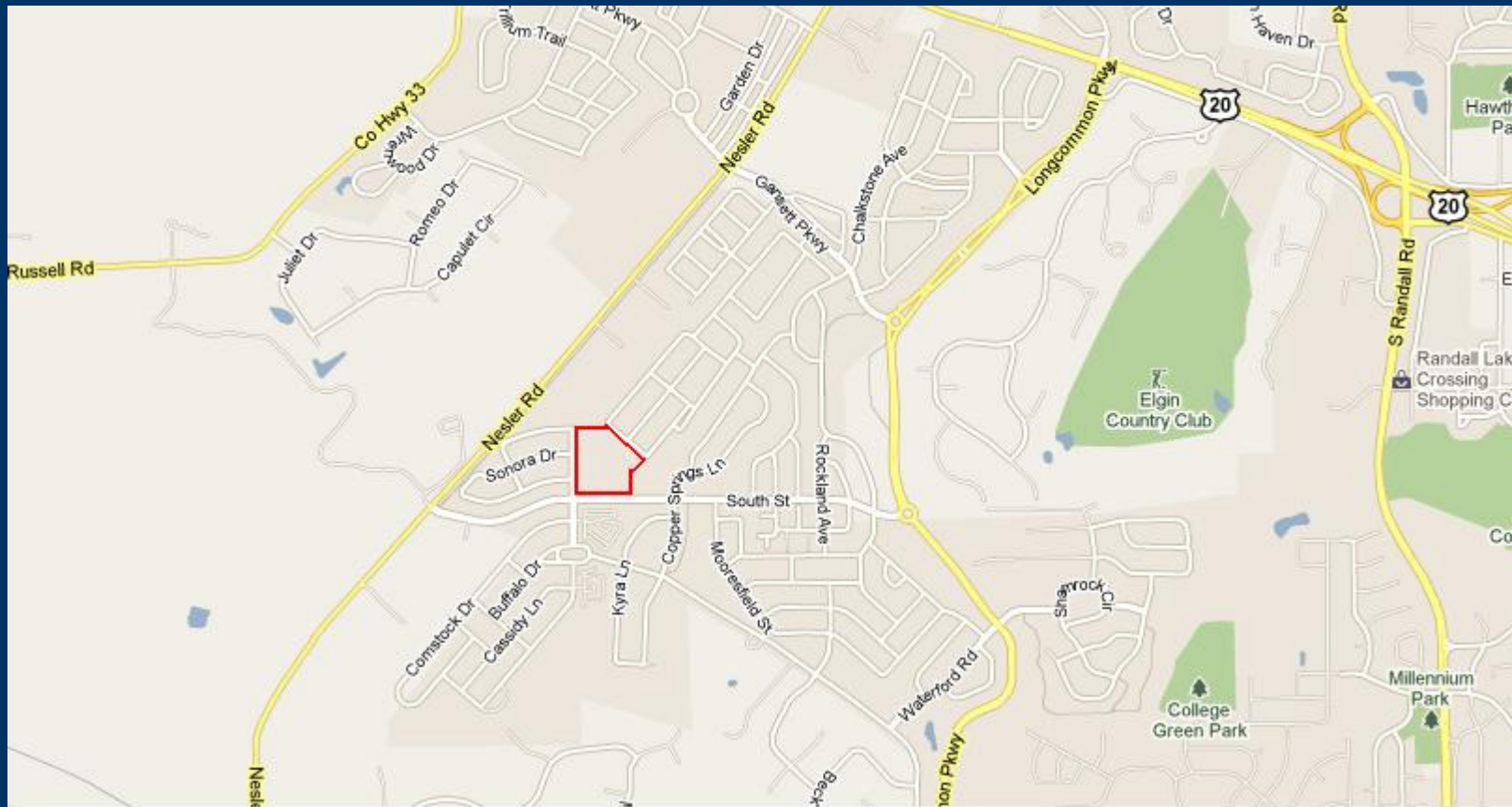
www.stahelin.com

M.A.S.

BROKERAGE, LLC.

NOTE: THIS 1" = 150' SCALE DRAWING IS PROVIDED TO DISPLAY THE DETAILS BOUNDARY OF THE SUBDIVISION. REFER TO SHEETS 2, 3, 4, & 5 FOR PARTICULARS ON INDIVIDUAL LOTS, LOCATION OF LOTS, BUILDING SETBACK LINES, EASEMENT LINES, CENTERLINES, & ADDITIONAL NOTES, ETC.





Take I-355 to Elgin O'Hare West. Take Route 20 west to Nesler Road. Make a left on Nesler Road to South Street, take a left to Shadow Hill Drive and take a left to the vacant land.